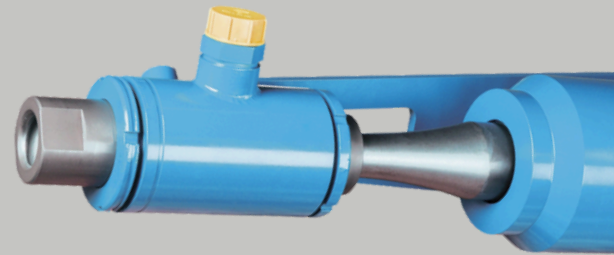
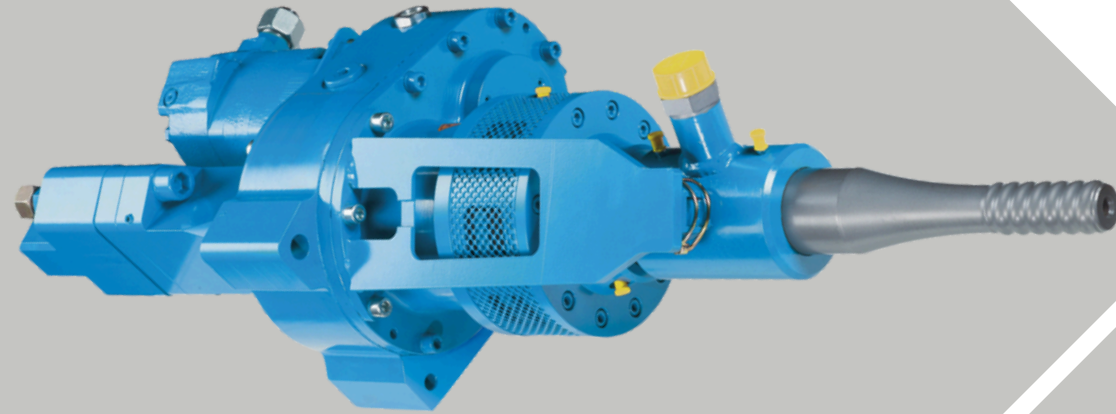


terra
infrastructure

safety: efficient and sustainable



DRIFTER
HB10

DRIFTER HB10

HB10 is a small-size Drifter (top-hammer) especially developed for:

- Micropile drilling up to a casing diameter of 2.5 inch (63.5 mm)
- Threaded hollow bar drilling (self-drilling anchors) up to a bar diameter of 1.5 inch (40 mm)

HB10 has a standard built-in rubber damping mechanism to avoid blank impacts and to allow percussion during retraction of casings.

HB10 offers electrical switching between the percussion mechanism and the speed of the rotary drive. Hydraulical switching is also possible.

HB10 offers two different motors that provide different speeds and torques (Standard: 245 ccm, Alternative: 310 ccm)

HB10 has a total weight of 100 kg

Percussion Unit

Operating pressure	150 - 180 bar
Oil flow rate	50 - 60 l/min
Impact rate max.	3,000 min ⁻¹
Single impact energy max.	160 Nm

Shank Adaptors (Striker Bars)

Male thread	R32 left R38 left T38 left
Female thread	R32 left R38 left TITAN 30/11 left, 40/16 left

OPTIONS

- External flushing head can be fitted onto an extended shank adaptor
- Built-in RPM sensor with external box for speed indication
- Central lubrication system

Rotary Drives

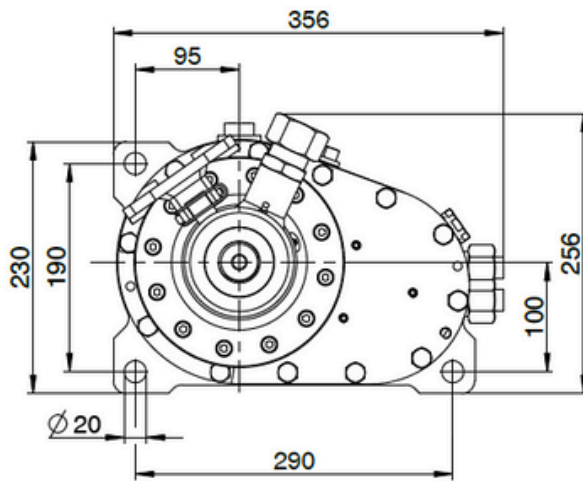
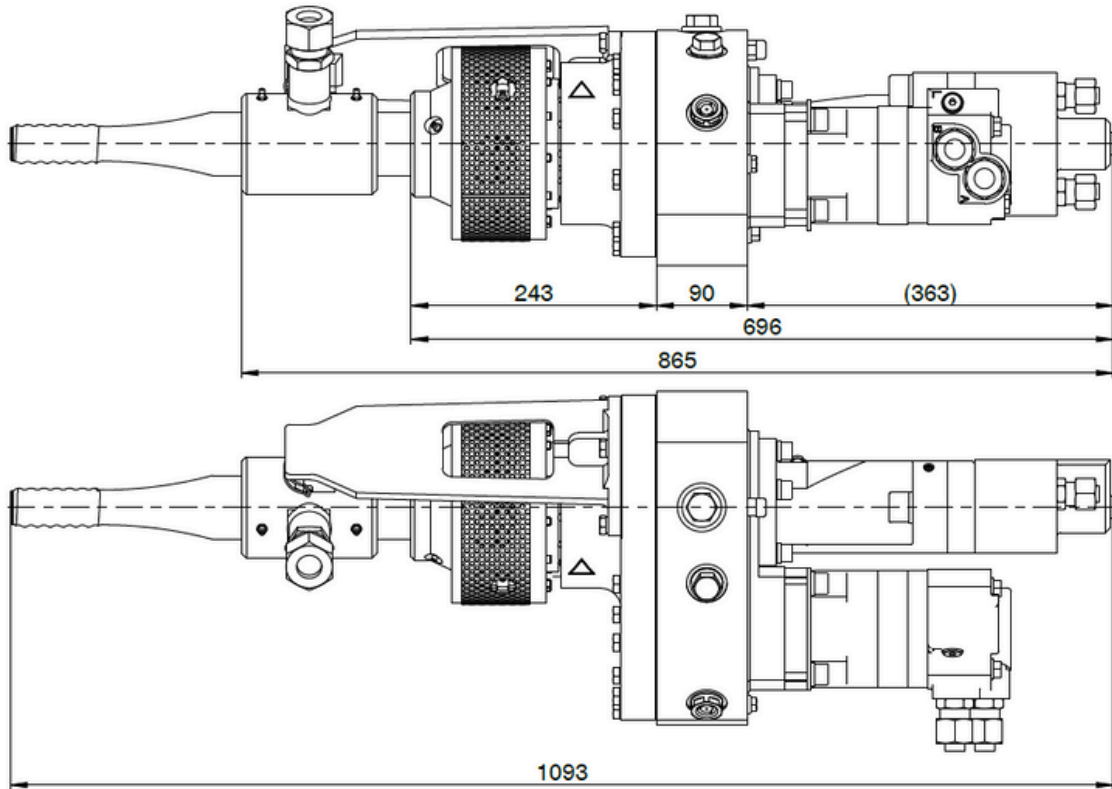
Motor-Version 1x 245 ccm

Pressure at rotary drive			105 bar			140 bar			170 bar			200 bar		
Gear			1 st			1 st			1 st			1 st		
Oil flow rate (l/pm)	50	Torque (Nm) Speed (rpm)	511 144			684 141			857 135			1,015 128		
	75	Torque (Nm) Speed (rpm)	504 208			677 203			850 197					
	95	Torque (Nm) Speed (rpm)	482 261			662 256			842 248					

Motor-Version 1x 310 ccm

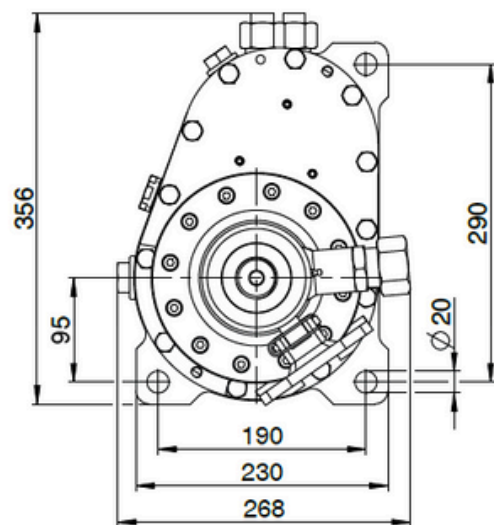
Pressure at rotary drive			70 bar			105 bar			140 bar			170 bar		
Gear			1 st			1 st			1 st			1 st		
Oil flow rate (l/pm)	50	Torque (Nm) Speed (rpm)	425 117			648 116			878 114			1,094 110		
	75	Torque (Nm) Speed (rpm)	410 167			634 165			871 163					
	95	Torque (Nm) Speed (rpm)	410 209			619 208			857 203					

Dimensions

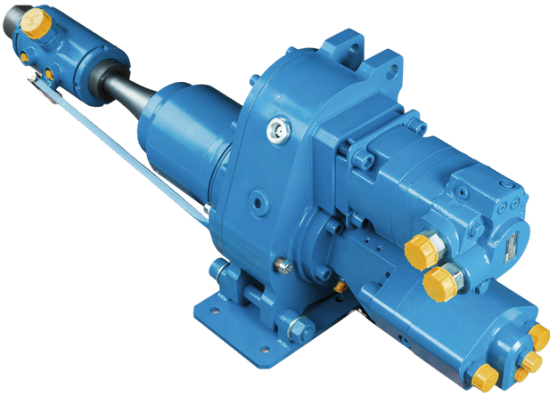
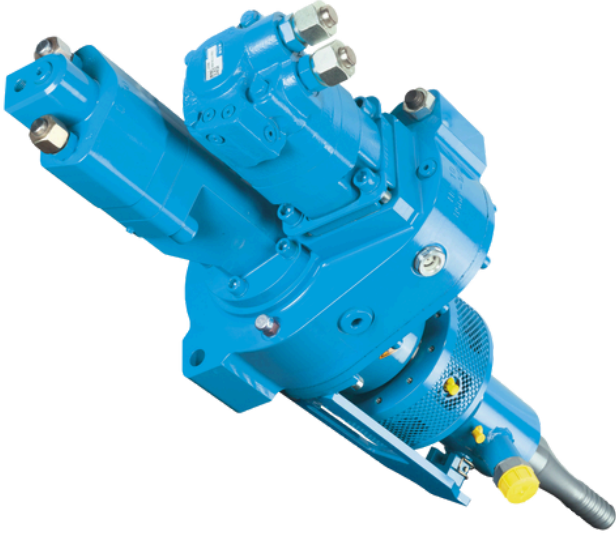
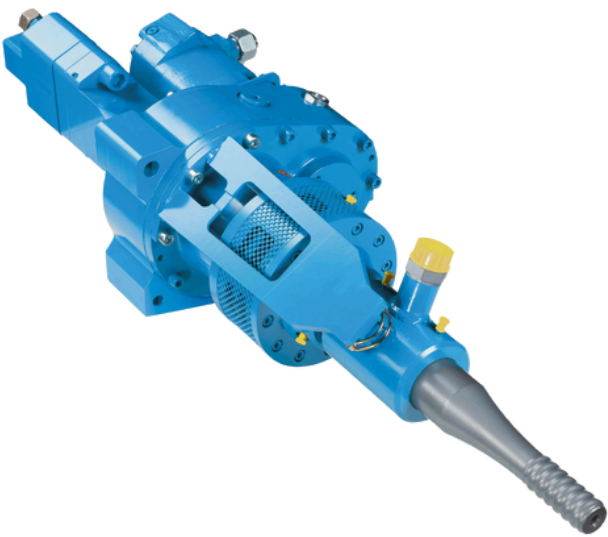


Motor seitlich / motor to the side

Gewicht / weight: 100 kg



optional
Motor oben / motor on top



terra infrastructure GmbH, Alte Liederbacher Straße 6, 36304 Alsfeld, Germany
P: +49 6631 781-0
sales.drilling@terra-infrastructure.com | www.terra-infrastructure.com

Australia

terra infrastructure Pty Ltd, 11 Woodford Pl, Thornton NSW 2322, Australia
P: +61 2 8448-3555
info.anz@terra-infrastructure.com
www.terra-infrastructure.com.au

New Zealand, Pacific Islands

terra infrastructure Pty Ltd, 180 Fred Taylor Drive, Whenuapai Auckland 0814, New Zealand
P: +64 9 416-8891
info.anz@terra-infrastructure.com
www.terra-infrastructure.co.nz

Baltic States

terra infrastructure UAB, Liepų g. 83, 93269 Klaipėda, Lithuania
P: +370 46 355-401
www.terra-infrastructure.com/lt



terra
infrastructure